

Lyll Street, SW1

Gross internal area (approx.)

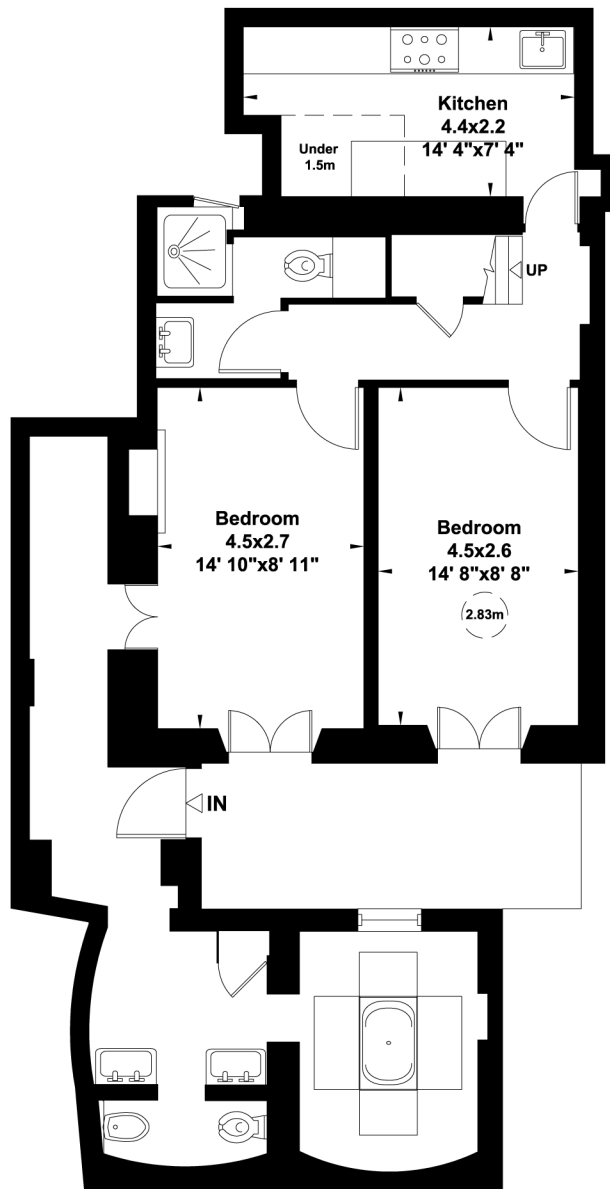
114 Sq m (1232 Sq ft) Including Under 1.5m

112 Sq m (1213 Sq ft) Excluding Under 1.5m

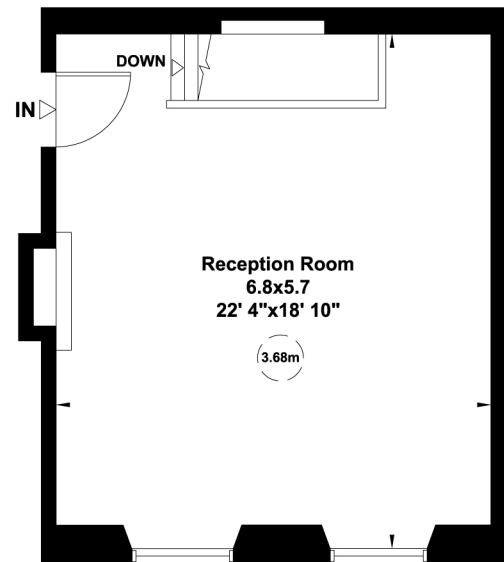
For identification only, Not to Scale



capital 020 8671 7722



Lower Ground Floor



Ground Floor

Not to scale, for guidance only and must not be relied upon as a statement of fact. All measurements and areas are approximate only (and have been prepared in accordance with the current edition of the RICS Code of Measuring Practice).